

W i f i - s o f t

## **DATASHEET**

### **UniBox U-100** Network Access and Bandwidth Controller

UniBox is an intelligent access controller or hotspot gateway that provides complete control over your wireless network. UniBox allows network administrators centrally manage wired and wireless network, avoid unauthorized access and track real-time activity on the network.



[www.wifi-soft.com](http://www.wifi-soft.com)



+91 (20) 3018 5577



[sales@wifi-soft.com](mailto:sales@wifi-soft.com)

W i f i - s o f t

### **UniBox U-100** Network Access and Bandwidth Controller

D A T A S H E E T

# UniBox U-100

NETWORK ACCESS AND BANDWIDTH CONTROLLER



UniBox U-100 comes with a captive portal engine, bandwidth control, policy manager, URL tracker, reporting system and is designed to work seamless with WiFiLAN Cloud hotspot manager. Remote U-100 units can be centrally controlled and tracked using WiFiLAN thus allowing administrators to have complete control on their Wi-Fi networks.

UniBox U-100 belongs to a family of UniBox controllers that is specially designed for managing network access in small venues like cafes, restaurants, small hotels/inns, training institutes, small offices and public Wi-Fi hotspots. U-100 is capable of handling 100 concurrent user sessions and is built on reliable Linux platform to provide high availability and performance for medium-sized networks.

## CAPTIVE PORTAL



# FEATURES

## Universal Controller

- ▶ Wired/Wireless Access Controller
- ▶ Captive Portal System
- ▶ Hotspot Billing
- ▶ Built-in AAA/RADIUS Server
- ▶ On-board DHCP Server
- ▶ SQL Database

## Networking

- ▶ Gigabit LAN & WAN Ports
- ▶ DNS Server
- ▶ Multi-WAN \*
- ▶ Port Forwarding
- ▶ Group-based Routing
- ▶ Network Monitoring

## Policy Manager

- ▶ Bandwidth Rate Limiting
- ▶ Time and Data Quota Limits
- ▶ Dynamic Bandwidth Allocation
- ▶ Group-based Policies
- ▶ Fair Usage Policy
- ▶ Date/Time Policies

## User Management

- ▶ Automated User Provisioning
- ▶ Per-User Rate Limits
- ▶ MAC-based Authentication
- ▶ Approval-based Registrations
- ▶ User Groups

## Hotspot Billing

- ▶ Billing Plans
- ▶ Payment Gateway Integration
- ▶ Access Codes / Vouchers
- ▶ Integration with Multiple PMS Vendors
- ▶ Canned Emails
- ▶ Tiered Billing
- ▶ Automated Emails

## Captive Portals

- ▶ Template-based Captive Portals
- ▶ Multiple Login Methods
- ▶ On-board Portal Server
- ▶ Two-Factor (SMS/OTP) Logins
- ▶ Social Media Login
- ▶ Ad Integration

## Reporting

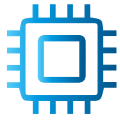
- ▶ Online Users
- ▶ Usage Reports
- ▶ Social Media Profiling
- ▶ Revenue Reports
- ▶ PMS & Voucher Reports
- ▶ Network Monitoring Reports
- ▶ Automated Reporting

## Compliance

- ▶ Group-based URL Filtering
- ▶ Web Logging & Archiving
- ▶ TRAI/DoT Compliance
- ▶ User Isolation
- ▶ MAC Blacklist

## Other

- ▶ Remote Syslogs
- ▶ Automatic Updates
- ▶ Role-based Administration
- ▶ Audit Trails
- ▶ Diagnostic Tools



## TECHNICAL SPECIFICATIONS



### Interface

1 LAN Port (RJ-45) – 10/100/1000 base T/Tx  
1 WAN Port (RJ-45) – 10/100/1000 base T/Tx  
1 Service(RJ-45) – 10/100/1000 base T/Tx  
2 USB Ports

### Networking

Static & Dynamic Routing  
DNS & DHCP Server  
Layer 2 isolation  
SNMP v2c support  
NTP (RFC 1305) support

### Power Rating

Input Voltage : 12V DC, 2 A  
Power Consumption : 5W  
Heat Dissipation : 300 BTU

### Compliance

CE Emission  
FCC Class A, RoHS

Form Factor: Standalone  
Physical Dimensions: 176 x 174 x 30 mm  
Net Weight: 500 gms or 1.1 lbs

Operating Temperature : 5 C to 50 C  
Non-condensing Humidity : 8% - 90%  
Fanless Design

### Physical Property

#### Dimensions

#### Environmental

## IDEAL FOR



Telecom



Hotels & Enterprises



Healthcare



Universities



Public Places



Airports



Transport

Wifi-soft LLC  
815-A Brazos St, Suite 326  
Austin, Texas - 78701 U.S.A.

Wifi-soft Solutions Pvt. Ltd.  
C-410, Teerth Technospace  
Baner, Pune - 411045, India

Wifisoft Global FZE  
P.O.Box - 120360,  
Sharjah, UAE